

Today's Lighting Fixtures:

photos and text excerpted from *Her Home* magazine

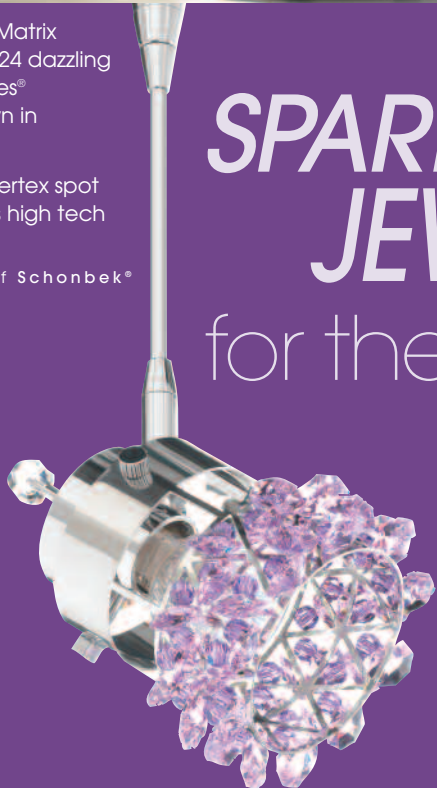


ABOVE: Schonbek's Matrix pendant comes in 24 dazzling colors. Smaller Edges® pendants are shown in the back ground.

RIGHT: Schonbek's Vertex spot pendant combines high tech with glamour.

photos courtesy of Schonbek®

SPARKLING JEWELRY for the Home



In recent years, designers and homeowners have looked to lighting for far more than functional illumination. Using different applications, they layered light to create different moods and to focus attention on certain areas or items.

Today, more often than not, the focus is on the lighting fixtures themselves. And it's no wonder. The lighting industry has exploded with innovative options, providing the perfect accents for nearly every décor style, from today's streamlined traditional, transitional and soft contemporary – to a profusion of retro and vintage looks.

CHANDELIERS AND PENDANTS

Chandeliers are the brightest stars in today's lighting design. No longer restricted to dining rooms and foyers, they've moved into virtually every room in the home – kitchens, bedrooms, bathrooms, hallways – even closets.

RIGHT: Kichler's Light Accents allow homeowner to dress their chandeliers up or down, with magnetic crystal embellishments.

photo courtesy of Kichler®

BELOW: Bruck Lighting's Jasmine Move Down is an adjustable counter weight pendant. (Cristello Down pendants also shown)

photo courtesy of Bruck Lighting Systems

OPPOSITE LEFT: Casablanca Fan Company's Moroccan Marrakesh™ fan in Antique Pewter with mahogany blades and halogen light fixture.

OPPOSITE RIGHT: Casablanca Fan Company's Reverie™ in Brushed Walnut with integrated light fixture.

photos courtesy of Casablanca Fan Company



Bruck® Lighting Systems has created several pendant lights that can be raised or lowered – especially nice over a kitchen island.

RECESSED AND TRACK LIGHTS

On the other end of the spectrum, more attention is being paid to recessed lights, which previously had been fairly nondescript. Halo® (a division of Cooper Lighting) has come out with their H3 line of recessed light housings. Designed to provide a high light output with a small ceiling presence, these 3-inch apertures are available in traditional black and white finishes, as well as new metallic finishes in antique copper, satin nickel and Tuscan bronze.

For homeowners creating a historic look, www.Beaux-Artes.com offers ornate Tuscan, Florentine, Victorian, French Provincial light housings and more. They have also introduced a “recessed chandelier” with Czechoslovakian and Swarovski crystals.

In the contemporary line, Schonbek's Geometrix collection includes three recessed lighting designs composed of Strass crystal. Slices™ has the quality of a diamond choker around the light. Vertex® presents its crystal in a technical-looking grid projecting from the light source. And Edges® offers the merest sliver of crystal floating under the recessed light.

A new bent on flexible track lighting, Bruck Lighting Systems' Flight Track is composed of two 1/16" x 1" aluminum profiles with festoon lamps. The track is made of pliable aluminum and may be customized for larger curves or bent with a template to achieve smaller radii. Sections can be easily joined together to create longer systems.

CEILING FANS

In the last few years, ceiling fans have been catching up with the array of lighting fixture styles. Casablanca® Fan Company has one of the widest selections, including a variety of casual, traditional and contemporary fans in today's most popular finishes; fans representing classic design periods; plus Oriental, Polynesian, Moroccan and Mission styles, just to name a few.

paired with burnished brass, rustic bronze and even wrought iron. For those looking for a lighter finish, Kichler's new Edenvale™ collection features a hand-rubbed golden brulee. The company has also released a line of updated tiffany fixtures, which includes chandeliers, pendants and sconces.

Kichler's new Light Accents™ allows homeowners to customize their chandeliers. The collection includes 72 different glass, acrylic and crystal embellishments – 17 of which have been specifically designed to coordinate with some of Kichler's most popular lighting families. Using Magtrim technology, it is easy to add or remove Light Accents to any steel surface, including chandeliers, wall sconces and lamps.

Schonbek®, maker of traditional crystal chandeliers for 134 years, recently came out with their Geometrix™ collection, a stunning line of contemporary chandeliers and pendants. The company uses lily-cut Strass® crystal octagons by Swarovski and weaves them into cylinders, spheres, cubes, oblongs, pyramids, spirals and slices.

Available in 37 different crystal colors, the Geometrix line includes their first dishwasher-safe crystal chandelier, Da Vinci. The crystal-covered sphere comes apart in sections to fit into a standard dishwasher and is available in 10-, 12-, 18- and 24-inch diameters. (The company cautions owners not to wash their dishes and silverware in the same load.)



Choices are mind-boggling, with more finishes and combinations than ever before. Metals run the gamut from rich and refined to beautifully weathered – often accomplished by layering one color over another and then hand rubbing to reveal flecks of color.

Globes once predominantly white or clear are now available in an array of colored and textured glass. Crystals are daringly



Bruck® Lighting Systems' Flight Track System can be flush mounted or suspended horizontally or vertically. photo courtesy of Bruck Lighting Systems

And thanks to Fanimation®, homeowners no longer have to choose between the clean lines of a lighting fixture and the practical comfort of a ceiling fan. Their Air Shadow™ collection features blades which retract when not in use.



SWITCHES

Not too long ago, choosing switch plates was pretty simple: beige or brown. Not so today. Flopping Fish™ recently introduced limited edition gift sets of hand-finished, aged-copper patina switch plates, frames and plaques. Lutron offers a wide array of gloss and matte colors plus satin and metal finishes.

If that wasn't enough, www.SwitchHits.com has over 160,000 decorative switch plates in stock, in every conceivable material – including granite, marble, Corian®, leather, ceramics, copper, art glass and clay.

Convenience is also an option; with the IntelaVoice™ Wall switch, homeowners can turn their lights on and off and control the brightness with voice commands.

* * * * *

Clearly, the lighting world has never been so exciting. But the tremendous volume of choices can also be somewhat overwhelming, particularly when faced with selecting lighting for an entire home. Interior decorators

and lighting designers can create a cohesive plan based on your tastes, décor, lifestyle and budget. Large lighting stores also employ knowledgeable staff that can provide practical advice and creative insights. Finally, many large lighting companies offer families of fixtures to provide a coordinated look from room to room. ■